

Personal Digital Learning Programme (PDLP)

2025 Sec 1 Registration



Outline

1. Background & Intended Outcomes
2. Device Management Application (DMA)
3. Personal Learning Device (PLD) Model



01. BACKGROUND & INTENDED OUTCOMES

National Digital Literacy Programme (NDLP)



BACKGROUND

Launched in March 2020 to **make digital learning inclusive** by equipping students with the digital literacies to be future-ready.

In 2020, MOE announced that every student will **own a school-prescribed personal learning device (PLD)** by end-2021.



INTENDED OUTCOMES



**Support the
Development of Digital
Literacies**



**Support self-directed and
collaborative learning**



**Enhance Teaching and
Learning**



LEARNING WITH PLD

SINGAPORE

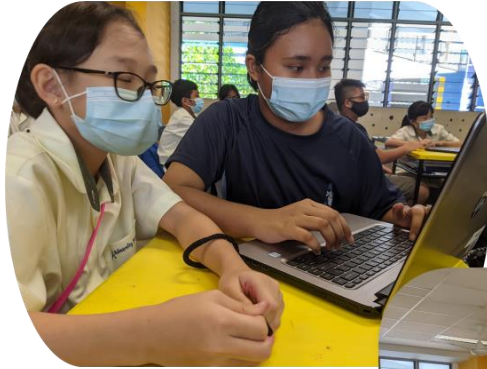
Student
Learning
Space



G Suite for Education



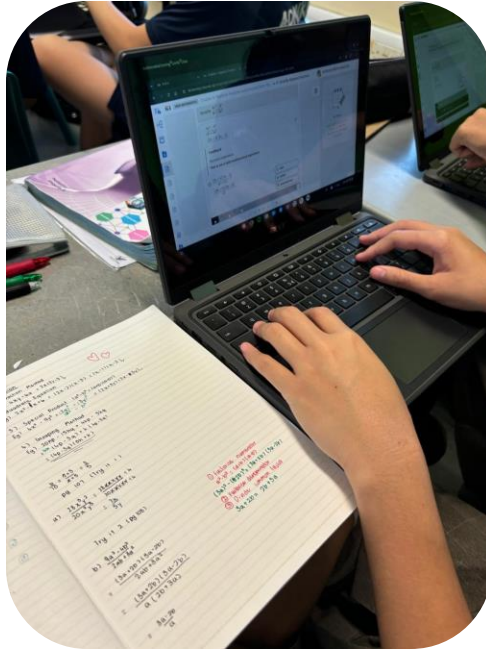
LEARNING WITH PLD



LEARNING WITH PLD



LEARNING WITH PLD



LEARNING WITH PLD



STUDENTS' EXPERIENCES



[Video Link](#)

02.

**SUPPORTING STUDENTS IN
THE SAFE AND EFFECTIVE
USE OF DEVICES**



Supporting Students in Safe and Effective Use of the Devices

The school has measures in place to enable a safer digital environment for learning with the use of PLDs, e.g.

- Classroom management and routines
- Educating students on Cyber Wellness
- Partnering parents/guardians to support students in their use of technology for learning
- Device Management Application (DMA)





Cyber Wellness Education in CCE

Educating students on Cyber Wellness

MOE has made significant changes to the Character and Citizenship Education (CCE) curriculum. Cyber Wellness lessons will feature significantly in these lessons.


The broad topics covered in Cyber Wellness are:

- Cyber Use
- Cyber Identity
- Cyber Relationships
- Cyber Citizenship
- Cyber Ethics

For more information of Cyber Wellness in ADSS,
<https://www.admiraltysec.moe.edu.sg/cyberwellness/parents/permalink/>



Parents'/Guardians' Role

- We would like to partner parents/guardians so that that students are well supported in their use of technology for learning.
 - As parents/guardians, you can help in the following ways:
 - Model good digital habits for your child/ward e.g. parents/guardians not using devices during family meals.
 - Know your child/ward well, and have conversations with your child/ward about safe and responsible use of technology.
 - Discuss and come up with ground rules for internet/device usage that both your child/ward and you can agree with.
 - Encourage your child/ward to use productivity tools using his/her PLD, to organise information and simplify tasks for efficiency.
- 

Parents' Voices: In Conversation on Students' Use of PLDs for Learning



[Video Link](#)


Device Management Application (DMA)

The DMA has three components.



Usage Management Service (UMS)

Protects your child from harmful online content, and sets helpful limits on the use of the PLD



Classroom Management Service (CMS)

Helps your child's teacher manage the PLDs during lessons, and to easily share relevant apps, websites and lesson materials



Mobile Device Management Service (MDM)

Allows the installation of relevant apps for learning and helps support device security

Device Management Application (DMA)

- Your child's/ward's PLD will be installed with a Device Management Application (DMA) to provide a safer digital environment for learning.
- Installation of the DMA will be performed after the collection of the device. Students will be guided on the installation.
- This applies to both devices purchased through the school and student owned devices.
- The DMA will be funded by MOE and will be uninstalled from the device when your child/ward graduates/leaves the school.



03.

PERSONAL LEARNING DEVICE (PLD) MODEL



PLD Model



- Acer 12.2" Chromebook Convertible
- Estimated Cost: \$550 - \$600
- Warranty & Insurance: 3 years



chromebook

PLD Model Specification

- Memory: 8GB Memory
- Processor: Intel N200 Processor
- Storage: 64GB eMMC
- Weight: 1.35 kg
- What's in the box: Device, Power adaptor, USB Mouse, Carrying Case, Active Stylus